

NEW!

 | HUTCHINSON®

Super VHC Mount

We make it **possible**



DESCRIPTION & CHARACTERISTICS:

- » Designed for MIL-S-901D shipboard shock.
- » Can be deck mounted or shear bulkhead mounted.
- » Will deflect over 3.75" in all directions.
- » Attenuates most severe 901D shock to below 10G at rated load.
- » Isolation for a wide range of foundation stiffnesses, including 14 Hz decks.
- » Natural frequency 7-8 Hz at rated load in compression.
- » Materials:
 - Neoprene
 - Steel structural elements
 - Other materials available on special order

SUPER VHC MOUNT ADVANTAGES:

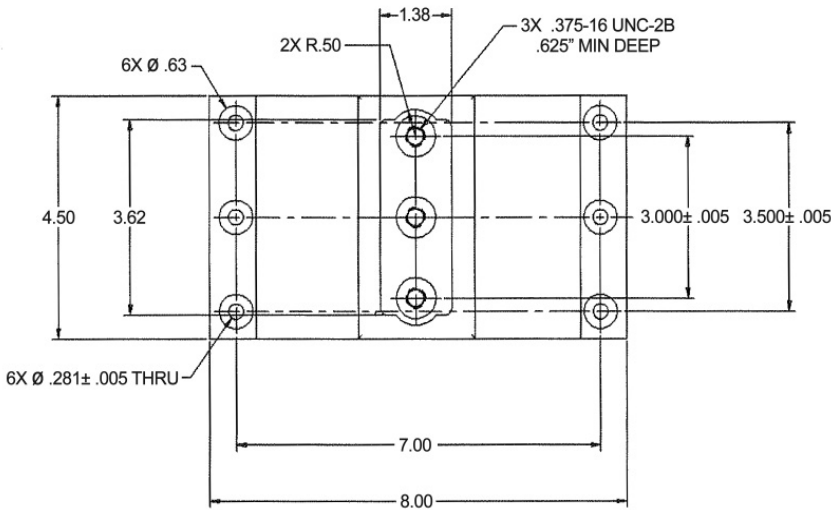
- » Shock attenuation, vibration isolation and structure borne noise attenuation – all in one mount.
- » Higher deflection capability than standard VHC mounts.
- » Multifunctional design for use in “bulkhead only” installations, as well as base and bulkhead mounting.
- » Installation geometry allows for easy upgrades as payload mass changes.
- » Common to mounting systems in use today.

See other side for Load Deflection Curves & Schematic Drawings

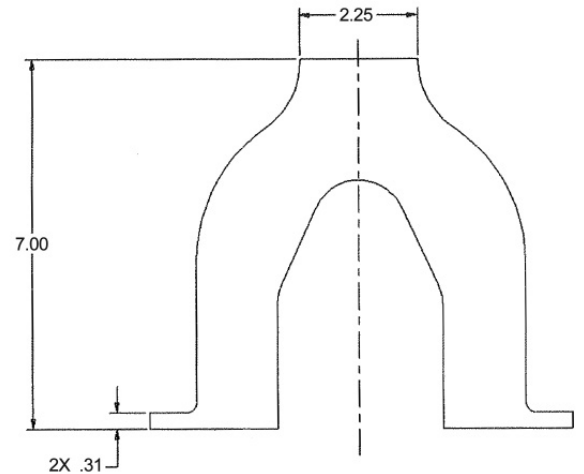
Super VHC Mount

Technical Specifications

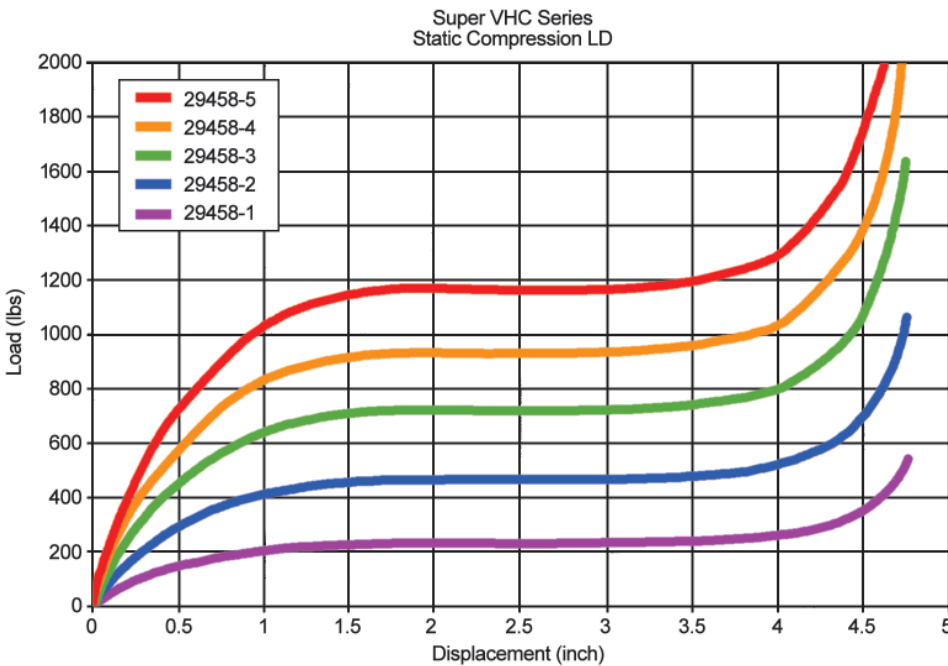
Dimensional Drawing # 1



Dimensional Drawing # 2



Load Deflection Curves



Load Rating Chart

Part #	Load Rating (LBS)	Load Rating (KGS)
29458-1	100	45
29458-2	200	91
29458-3	300	136
29458-4	400	181
29458-5	500	227

Additional information on the Super VHC Mount as well as, our other products, is available at www.hutchinsonai.com

For a complete technical information package on the Super VHC Mount, please call us at 508.417.7000